



<http://www.ebiz-tcf.eu>

DRAFT

IMPLEMENTATION GUIDE TRANSACTION "INFORMATION REQUEST FOR SERVICE"

Version: draft

Date of release: 26/6/2023

Document code: TRC007

technical Documentation: <http://www.ebiz.enea.it>

XML Schemas repository: <http://www.ebiz.enea.it/moda-ml/repository/schema/draft/default.asp>

Guides repository: <http://www.ebiz.enea.it/moda-ml/repository/guide/draft/default.asp>

Guide filename: TRC007-eBIZ-InformationRequestForService.pdf

0. PREMISE

This document contains a proposal for the updating and extension of eBIZ specifications starting from the eBIZ version 2018. Under the name of 'Draft version' it is reported the result of an extensive work of analysis and consultation aimed at developing and maintaining eBIZ specifications.

In particular, the content of this proposal is the result of various activities, mainly those carried out within the framework of the **TRICK project** funded by the European Commission: grant agreement 958352, call H2020-LOW-CARBON-CIRCULAR-INDUSTRIES-2020 / H2020-LCCI-2020-EASME-twostage.

The technical contents are backwards compatible with the latest official published version, with the exclusion of the totally new concepts added explicitly for the version that are thought as incremental evolution of the knowledge base.

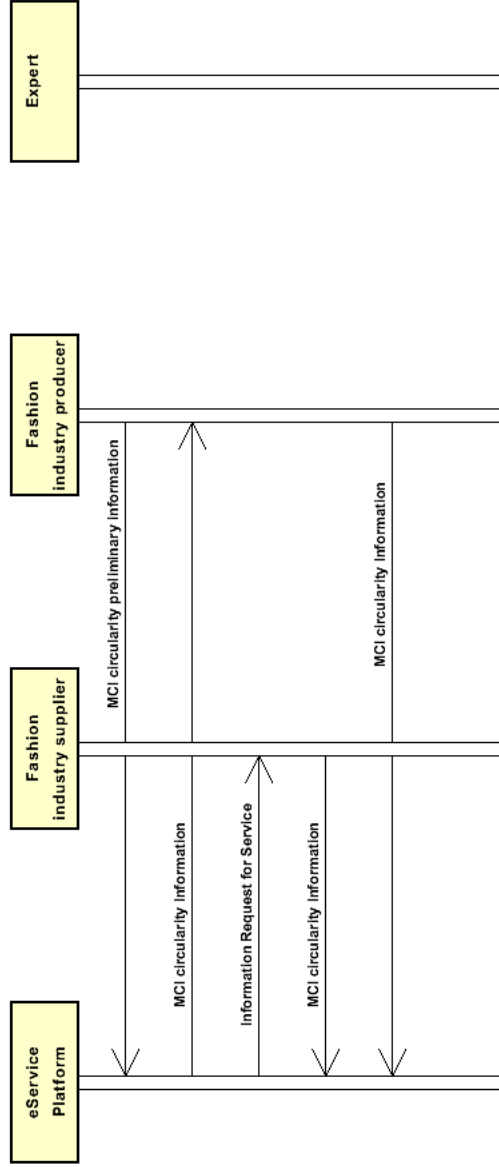
1. BUSINESS DESCRIPTION

1.1 Scope

This guide aims to illustrate the standard XML format of the document type "Health Protection Information Request", providing instructions for its use in the context of a TRANSPARENCY SYSTEM involving Fashion Manufacturers, their customers, third parties and in case customs authorities, eBusiness and eCommerce platforms. All the rules necessary for the construction and validation of the document are expressed through a specific XML schema, which is presented in detail in the paragraph "Implementation Guide".

1.2. Possible scenario

S2.1 Material Circularity Assessment service execution



2. IMPLEMENTATION GUIDE

2.1 General structure of XML document

All the business data that can be exchanged through this class of documents are shown in the following "document structure", that provides a simplified vision of the Schema.

In particular:

- the two numbers following each element define its "cardinality" (minimum and maximum number of occurrences); the minimum equal zero indicates that the element is optional, the minimum greater than zero indicates that is mandatory;
- the bold character denotes the complex elements (aggregates of simple elements) that were built for the sake of functionality and re-usability of some complex informations sets. The child elements in each parent element are easily spotted as "indented";
- the symbol "@" denotes an attribute of the preceding element; here "the usage indicator (optional, required, ...)" is shown in square brackets.

Structure

SRVinformationrequest

@version [Optional] [Default= draft]

@useProfile [Optional]

```
| SRVheader 1-1
| | msgID 0-1
| | msgDate 0-1
| | @dateForm [Optional]
| | senderParty 1-1
| | @role [Optional]
| | @sender [Optional]
| | | id 1-1
| | | @numberingOrg [Optional]
| | | legalName 0-1
| | | dept 0-1
| | | subDept 0-1
| | | person 0-1
| | | @email [Optional]
| | | @phone [Optional]
| | | @fax [Optional]
| | | street 0-1
| | | city 0-1
| | | subCountry 0-1
| | | country 0-1
| | | postCode 0-1
| | | geoCoordinates 0-1
| | | @um [Optional] [Default= DEGD]
| | | @geoRefSystem [Optional]
| | | | xGeoCoord 1-1
| | | | yGeoCoord 1-1
| | | | zGeoCoord 0-1
| | receiverParty 1-1
| | @role [Optional]
| | @sender [Optional]
| | | id 1-1
| | | @numberingOrg [Optional]
| | | legalName 0-1
| | | dept 0-1
| | | subDept 0-1
| | | person 0-1
| | | @email [Optional]
| | | @phone [Optional]
| | | @fax [Optional]
| | | street 0-1
| | | city 0-1
| | | subCountry 0-1
| | | country 0-1
| | | postCode 0-1
| | | geoCoordinates 0-1
| | | @um [Optional] [Default= DEGD]
```

```
| | | @geoRefSystem [Optional]
| | | | xGeoCoord 1-1
| | | | yGeoCoord 1-1
| | | | zGeoCoord 0-1
| | platformServiceReference 1-1
| | | platformServiceCode 1-1
| | | @codeList [Optional]
| | | serviceTicketID 0-1
| | | serviceRequestedAction 1-1
| | | @codeList [Optional]

| furtherRequestedInformation 0-9
| @ln []
```

2.2 Detailed description of document elements

Following tables show all elements (complex and simple) used in this document. Description includes: 1) element's information: xml tag, name, brief description, data type and syntax constraints; 2) information about use of the element in a particular position in the document: xpath and possible associated notes.

2.2.1 Complex elements (Aggregate Business Information Entities)

Complex elements are those elements whose content is composed of other elements (childs). Complex elements are alphabetically ordered.

| | |
|---------------------------------|--|
| geoCoordinates | geographical coordinates (XPath SRVinformationrequest/SRVheader/senderParty/geoCoordinates) 0-1 (XPath SRVinformationrequest/SRVheader/receiverParty/geoCoordinates) 0-1 |
| platformServiceReference | service instruction and reference - base type: string, (XPath SRVinformationrequest/SRVheader/platformServiceReference) 1-1 |
| receiverParty | Details of the party receiving the document. - base type: Nad, (XPath SRVinformationrequest/SRVheader/receiverParty) 1-1 |
| senderParty | Details of the party sending the document. - base type: Nad, (XPath SRVinformationrequest/SRVheader/senderParty) 1-1 |
| SRVheader | header of documents supporting ePlatform services (XPath SRVinformationrequest/SRVheader) 1-1 |

2.2.2 Simple elements (Basic Business Information Entities)

Simple elements are those elements whose content is characterized by a data type plus a domain of possible values. Simple elements are alphabetically ordered.

| | |
|-----------|--|
| city | name of the city (town, village) - base type: string, max length: 40, (XPath SRVinformationrequest/SRVheader/senderParty/city) 0-1 (XPath SRVinformationrequest/SRVheader/receiverParty/city) 0-1 |
| @codeList | it specifies the URL where the list of codes used to make an instance of the element can be found - base type: string, max length: 255, (XPath SRVinformationrequest/SRVheader/platformServiceReference/platformServiceCode/@codeList) [Optional] - nota: indicate the URL of the platform supplying the service (XPath SRVinformationrequest/SRVheader/platformServiceReference/serviceRequestedAction/@codeList) [Optional] - nota: Insert URL codelist of the platform services actions available. |
| country | code of the nation - base type: string, cod. table: T10 http://www.ebiz.enea.it/moda-ml/repository/codelist/draft/gc_T10.xml (XPath SRVinformationrequest/SRVheader/receiverParty/country) 0-1 (XPath SRVinformationrequest/SRVheader/senderParty/country) 0-1 |
| @dateForm | format used for the date - base type: string, cod. table: NT29 http://www.ebiz.enea.it/moda-ml/repository/codelist/draft/gc_NT29.xml (XPath SRVinformationrequest/SRVheader/msgDate/@dateForm) [Optional] |
| dept | name or code of a department - base type: string, max length: 40, (XPath SRVinformationrequest/SRVheader/receiverParty/dept) 0-1 |

| | |
|-----------------------------|--|
| | (XPath SRVinformationrequest/SRVheader/senderParty/dept) 0-1 |
| @email | electronic mail address of the contact person within a Party - base type: string, max length: 250, (XPath SRVinformationrequest/SRVheader/senderParty/person/@email) [Optional] (XPath SRVinformationrequest/SRVheader/receiverParty/person/@email) [Optional] |
| @fax | fax number of the contact person within a Party - base type: string, max length: 35, (XPath SRVinformationrequest/SRVheader/senderParty/person/@fax) [Optional] (XPath SRVinformationrequest/SRVheader/receiverParty/person/@fax) [Optional] |
| furtherRequestedInformation | Details about the request for further information, free text, related to the service ticket referred in the platformServiceRef element of SRVheader. Html format allowed - base type: string, (XPath SRVinformationrequest/furtherRequestedInformation) 0-9 |
| @geoRefSystem | georeference system adopted for the coordinate (in example wgs84 with decimal degree o degree with minute and seconds) - base type: string, (XPath SRVinformationrequest/SRVheader/senderParty/geoCoordinates/@geoRefSystem) [Optional] (XPath SRVinformationrequest/SRVheader/receiverParty/geoCoordinates/@geoRefSystem) [Optional] |
| id | primary identification code of a Party; it is recommended to use an EORI number (with @numberingOrg= "EO") or the format: nation code (ISO 3166) + national tax code (i.e. VAT identification number) with @numberingOrg= "MF" - base type: string, max length: 15, (XPath SRVinformationrequest/SRVheader/receiverParty/id) 1-1 (XPath SRVinformationrequest/SRVheader/senderParty/id) 1-1 |
| legalName | legal name - base type: string, max length: 250, (XPath SRVinformationrequest/SRVheader/senderParty/legalName) 0-1 (XPath SRVinformationrequest/SRVheader/receiverParty/legalName) 0-1 |
| @ln | Language code. - base type: string, cod. table: NT60 http://www.ebiz.enea.it/moda-ml/repository/codelist/draft/gc_NT60.xml (XPath SRVinformationrequest/furtherRequestedInformation/@ln) [] |
| msgDate | date of issue of the present message (xml document), according to one of the patterns YYYY-MM-DD, YYYY-MM-DD:HH-MM or YYYY-WW. - base type: string, (XPath SRVinformationrequest/SRVheader/msgDate) 0-1 |
| msgID | key identifier of the business document in the information system of the issuing Party. In case of more despatches of the same business document, it is unchanged. - base type: string, max length: 35, (XPath SRVinformationrequest/SRVheader/msgID) 0-1 |
| @numberingOrg | code specifying the organisation who has created or owns the coding or numbering system - base type: string, cod. table: NT6 http://www.ebiz.enea.it/moda-ml/repository/codelist/draft/gc_NT6.xml (XPath SRVinformationrequest/SRVheader/receiverParty/id/@numberingOrg) [Optional] (XPath SRVinformationrequest/SRVheader/senderParty/id/@numberingOrg) [Optional] |
| person | name of a person (e.g. contact person within an organization) - base type: string, max length: 40, (XPath SRVinformationrequest/SRVheader/receiverParty/person) 0-1 (XPath SRVinformationrequest/SRVheader/senderParty/person) 0-1 |
| @phone | phone number of the contact person within a Party - base type: string, max length: 35, (XPath SRVinformationrequest/SRVheader/senderParty/person/@phone) [Optional] (XPath SRVinformationrequest/SRVheader/receiverParty/person/@phone) [Optional] |
| platformServiceCode | code of the available service |

| | |
|------------------------|--|
| | <p>- base type: string, cod. table: TRK01 http://www.ebiz.enea.it/moda-ml/repository/codelist/draft/gc_TRK01.xml (XPath SRVinformationrequest/SRVheader/platformServiceReference/platformServiceCode) 1-1</p> |
| postCode | <p>code defining the postal zone - base type: string, max length: 10, (XPath SRVinformationrequest/SRVheader/receiverParty/postCode) 0-1 (XPath SRVinformationrequest/SRVheader/senderParty/postCode) 0-1</p> |
| @role | <p>Third Party role qualifier - base type: string, cod. table: NT2 http://www.ebiz.enea.it/moda-ml/repository/codelist/draft/gc_NT2.xml (XPath SRVinformationrequest/SRVheader/receiverParty/@role) [Optional] - nota: <i>The use of this attribute is mandatory when the element to which it is associated has TRCHeader as its parent.</i> (XPath SRVinformationrequest/SRVheader/senderParty/@role) [Optional] - nota: <i>The use of this attribute is mandatory when the element to which it is associated has TRCHeader as its parent.</i></p> |
| @sender | <p>qualifier that specifies the Party issuing of the document - base type: boolean, (XPath SRVinformationrequest/SRVheader/receiverParty/@sender) [Optional] - nota: <i>This attribute is mandatory when the STYLESHEET must be used.</i> (XPath SRVinformationrequest/SRVheader/senderParty/@sender) [Optional] - nota: <i>This attribute is mandatory when the STYLESHEET must be used.</i></p> |
| serviceRequestedAction | <p>requested service action - base type: string, cod. table: TRK02 http://www.ebiz.enea.it/moda-ml/repository/codelist/draft/gc_TRK02.xml (XPath SRVinformationrequest/SRVheader/platformServiceReference/serviceRequestedAction) 1-1</p> |
| serviceTicketID | <p>service ticket identifier - base type: string, (XPath SRVinformationrequest/SRVheader/platformServiceReference/serviceTicketID) 0-1 - note: <i>mandatory after activation</i></p> |
| street | <p>street and building number identifying a location - base type: string, max length: 80, (XPath SRVinformationrequest/SRVheader/receiverParty/street) 0-1 (XPath SRVinformationrequest/SRVheader/senderParty/street) 0-1</p> |
| subCountry | <p>short name or code of the sub-country entity - base type: string, max length: 9, (XPath SRVinformationrequest/SRVheader/senderParty/subCountry) 0-1 (XPath SRVinformationrequest/SRVheader/receiverParty/subCountry) 0-1</p> |
| subDept | <p>name or code of a department - base type: string, max length: 40, (XPath SRVinformationrequest/SRVheader/receiverParty/subDept) 0-1 (XPath SRVinformationrequest/SRVheader/senderParty/subDept) 0-1</p> |
| @um | <p>specification of the unit of measure - base type: string, cod. table: NT7 http://www.ebiz.enea.it/moda-ml/repository/codelist/draft/gc_NT7.xml (XPath SRVinformationrequest/SRVheader/senderParty/geoCoordinates/@um) [Optional] [Default= DEGD] - nota: <i>when not specified assume decimal DEGREES</i> (XPath SRVinformationrequest/SRVheader/receiverParty/geoCoordinates/@um) [Optional] [Default= DEGD] - nota: <i>when not specified assume decimal DEGREES</i></p> |
| @useProfile | <p>use profile to which the present document is compliant if it was agreed by the parties. It is suggested a URI with reference to the firms or the URL of the profile. - base type: string, (XPath SRVinformationrequest/@useProfile) [Optional]</p> |
| @version | <p>Dictionary version from which the instance has been created</p> |

| | |
|-----------|---|
| | <p>- base type: string, cod. table: NT100 http://www.ebiz.enea.it/moda-ml/repository/codelist/draft/gc_NT100.xml (XPath SRVinformationrequest/@version) [Optional] [Default= draft]</p> |
| xGeoCoord | <p>geographical coordinate x , corresponding to latitude - base type: decimal, (XPath SRVinformationrequest/SRVheader/receiverParty/ geoCoordinates/xGeoCoord) 1-1 (XPath SRVinformationrequest/SRVheader/senderParty/ geoCoordinates/xGeoCoord) 1-1</p> |
| yGeoCoord | <p>geographical coordinate y , corresponding to longitude - base type: decimal, (XPath SRVinformationrequest/SRVheader/senderParty/ geoCoordinates/yGeoCoord) 1-1 (XPath SRVinformationrequest/SRVheader/receiverParty/ geoCoordinates/yGeoCoord) 1-1</p> |
| zGeoCoord | <p>geographical coordinate z , corresponding to altitude - base type: decimal, (XPath SRVinformationrequest/SRVheader/senderParty/ geoCoordinates/zGeoCoord) 0-1 - note: <i>altitude might be omitted</i> (XPath SRVinformationrequest/SRVheader/receiverParty/ geoCoordinates/zGeoCoord) 0-1 - note: <i>altitude might be omitted</i></p> |

2.3 Enumeration tables

List of enumeration tables used in the XML document. You can find all the tables with the corresponding codes at:
<http://www.ebiz.enea.it/eBIZ/imple/eBIZTCU-draft.asp?lingua=en&pag=6>

NT100 - eBIZ TCFUpstream version
NT2 - third party qualifier
NT29 - format of a date
NT6 - coding system owner/issuer
NT60 - language, codes from ISO 639-1 (subset)
NT7 - unit of measure
T10 - ISO3166 - Country
TRK01 - list of available services
TRK02 - list of services functions

(the most relevant tables are detailed in the following Annexes too)

ACKNOWLEDGEMENT



This action is part of the TRICK project, which has received funding from Horizon 2020 research and innovation programme under grant agreement No. 958352 of the European Union.

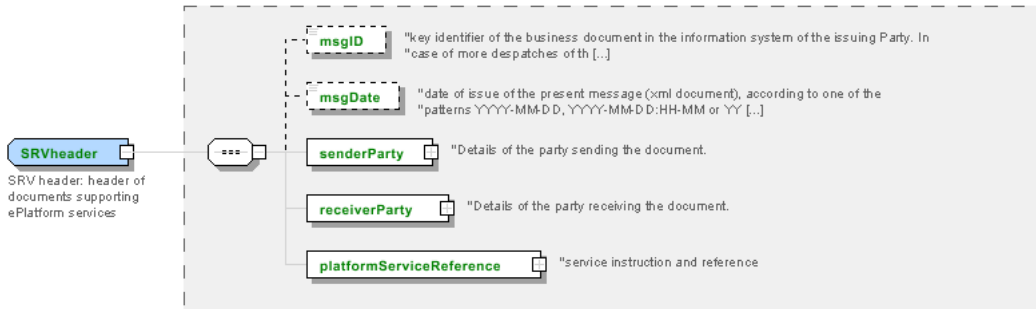
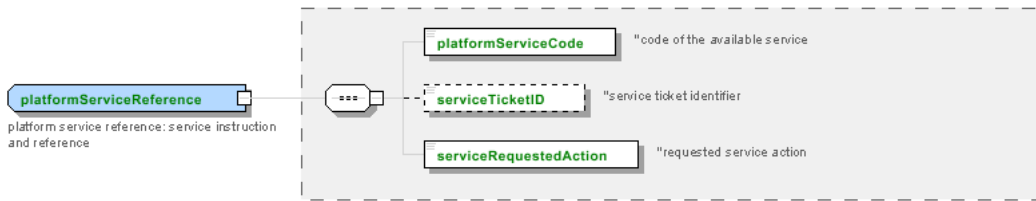
DISCLAIMER

The content of this document represents the views of the authors only and is their sole responsibility; it cannot be considered to reflect the views of the European Commission or any other body of the European Union.

The European Commission does not accept any responsibility for use that may be made of the information it contains.

Annex A

Representative images of the principal complex elements' structure.



Annex B

NT100 - eBIZ TCFUpstream version

dictionary version

Agency name: eBIZ

Decoding table: NT100

File codes list (Generic code): http://www.ebiz.enea.it/moda-ml/repository/codelist/draft/gc_NT100.xml

| Code | Description | Adoption note | Date of insertion |
|--------|-------------|---------------|-------------------|
| 2013-1 | v2013-1 | | 01/07/2013 |
| 2018-1 | v2018-1 | | 04/11/2018 |
| draft | draft | | 08/09/2017 |

NT2 - third party qualifier

Third Party role qualifier

Agency name: eBIZ

Decoding table: NT2

File codes list (Generic code): http://www.ebiz.enea.it/moda-ml/repository/codelist/draft/gc_NT2.xml

| Code | Description | Adoption note | Date of insertion |
|------|--------------------------------------|---------------|-------------------|
| AG | Sales Agent | | |
| AU | Auditor | | 08/04/2019 |
| BU | Buyer | | 13/06/2022 |
| CE | Certification authority | | 08/04/2019 |
| CM | Commissioner | | 13/06/2022 |
| CO | Quality Controller | | |
| CU | Customs authority | | 13/06/2022 |
| DC | Response to | | |
| DF | Invoicee | | |
| DI | Copy to (CC) | | 28/10/2014 |
| DM | Consignee | | |
| DP | Consignment address (Delivery Party) | | |
| EX | Expert | | 13/06/2022 |
| IM | Importer | | |
| OR | Originator | | 10/09/2014 |
| SC | Sub contractor | | 10/04/2019 |
| SM | Service/ePlatform manager | | 08/04/2019 |

| | | | |
|----|-----------------------------|--|------------|
| SP | Forwarder | | |
| SU | Supplier | | 13/06/2022 |
| TL | Test or analysis laboratory | | 13/06/2022 |
| TX | Tax Representative | | |

NT29 - format of a date

format used for the date

Agency name: eBIZ

Decoding table: NT29

File codes list (Generic code): http://www.ebiz.enea.it/moda-ml/repository/codelist/draft/gc_NT29.xml

| Code | Description | Adoption note | Date of insertion |
|------|--|---------------|-------------------|
| D | YYYY-MM-DD | | |
| M | YYYY-MM-DD:HH-MM (date and time) | | |
| S | AAAA-MM-GG:HH-MM-SS (date and time with seconds) | | 13/06/2022 |
| W | YYYY-WW | | |

NT6 - coding system owner/issuer

code specifying the organisation who has created or owns the registers of the present coding or numbering system

Agency name: eBIZ

Decoding table: NT6

File codes list (Generic code): http://www.ebiz.enea.it/moda-ml/repository/codelist/draft/gc_NT6.xml

| Code | Description | Adoption note | Date of insertion |
|------|---|---------------|-------------------|
| CBR | National customs brokers registry | | 12/06/2023 |
| CL | Customer/buyer | | |
| CO | Quality Controller | | |
| DU | D-U-N-S registry (Data Universal Numbering System) | | 04/05/2023 |
| EB | eBIZ | replaces 'ML' | 18/03/2019 |
| EN | GS1 (ex-EAN International) | | |
| EO | Registro EORI (Economic Operators Registration and Identification number) | | 04/03/2023 |
| ES | e-Stockflow | DEPRECATED | |
| FO | Supplier | | |
| GS | GS1 | | 01/07/2013 |
| MF | national taxation authority (i.e. VAT codes registry) | | |
| ML | Moda-ML | DEPRECATED | |

| | | | |
|-----|--------------------------------------|------------------|------------|
| PL | Application Platform | | 13/06/2022 |
| REX | Registered Exporter system (REX) | | 19/05/2023 |
| SP | Service Provider | | |
| SU | Enterprise Identification Number UID | Only switzerland | 04/03/2023 |

NT60 - language, codes from ISO 639-1 (subset)

Agency name: eBIZ / ISO

Decoding table: NT60

File codes list (Generic code): http://www.ebiz.enea.it/moda-ml/repository/codelist/draft/gc_NT60.xml

| Code | Description | Adoption note | Date of insertion |
|------|-------------------------|---------------|-------------------|
| af | Afrikaans | | 31/01/2019 |
| ar | Arabic | | 31/01/2019 |
| be | Belarusian | | 31/01/2019 |
| bg | Bulgarian | | 31/01/2019 |
| bn | Bengali | | 31/01/2019 |
| bo | Tibetan | | 31/01/2019 |
| bs | Bosnian | | 31/01/2019 |
| ca | Catalan, Valencian | | 31/01/2019 |
| cs | Czech | | 31/01/2019 |
| da | Danish | | 31/01/2019 |
| de | German | | 31/01/2019 |
| el | Greek, Modern (1453-) | | 31/01/2019 |
| en | English | | 31/01/2019 |
| eo | Esperanto | | 31/01/2019 |
| es | Spanish, Castilian | | 31/01/2019 |
| et | Estonian | | 31/01/2019 |
| eu | Basque | | 31/01/2019 |
| F | Female | | 15/04/2019 |
| fa | Persian | | 31/01/2019 |
| fi | Finnish | | 31/01/2019 |
| fr | French | | 31/01/2019 |
| ga | Irish | | 31/01/2019 |
| gd | Gaelic, Scottish Gaelic | | 31/01/2019 |
| gn | Guarani | | 31/01/2019 |
| he | Hebrew | | 31/01/2019 |
| hr | Croatian | | 31/01/2019 |

| | | | |
|----|--|--|------------|
| ht | Haitian, Haitian Creole | | 31/01/2019 |
| hu | Hungarian | | 31/01/2019 |
| hy | Armenian | | 31/01/2019 |
| ia | Interlingua (International Auxiliary Language Association) | | 31/01/2019 |
| id | Indonesian | | 31/01/2019 |
| is | Icelandic | | 31/01/2019 |
| it | Italian | | 31/01/2019 |
| ja | Japanese | | 31/01/2019 |
| jv | Javanese | | 31/01/2019 |
| ka | Georgian | | 31/01/2019 |
| km | Central Khmer | | 31/01/2019 |
| ko | Korean | | 31/01/2019 |
| ku | Kurdish | | 31/01/2019 |
| lb | Luxembourgish, Letzeburgesch | | 31/01/2019 |
| lo | Lao | | 31/01/2019 |
| lt | Lithuanian | | 31/01/2019 |
| lv | Latvian | | 31/01/2019 |
| mg | Malagasy | | 31/01/2019 |
| mk | Macedonian | | 31/01/2019 |
| mn | Mongolian | | 31/01/2019 |
| mt | Maltese | | 31/01/2019 |
| nl | Dutch, Flemish | | 31/01/2019 |
| no | Norwegian | | 31/01/2019 |
| pl | Polish | | 31/01/2019 |
| pt | Portuguese | | 31/01/2019 |
| ro | Romanian, Moldavian, Moldovan | | 31/01/2019 |
| ru | Russian | | 31/01/2019 |
| se | Northern Sami | | 31/01/2019 |
| sk | Slovak | | 31/01/2019 |
| sl | Slovenian | | 31/01/2019 |
| sm | Samoan | | 31/01/2019 |
| so | Somali | | 31/01/2019 |
| sq | Albanian | | 31/01/2019 |
| sr | Serbian | | 31/01/2019 |
| sv | Swedish | | 31/01/2019 |
| sw | Swahili | | 31/01/2019 |
| ta | Tamil | | 31/01/2019 |
| th | Thai | | 31/01/2019 |

| | | | |
|----|------------|--|------------|
| tr | Turkish | | 31/01/2019 |
| uk | Ukrainian | | 31/01/2019 |
| ur | Urdu | | 31/01/2019 |
| uz | Uzbek | | 31/01/2019 |
| vi | Vietnamese | | 31/01/2019 |
| zh | Chinese | | 31/01/2019 |

NT7 - unit of measure

specification of the unit of measure, it is a sub set of table Unit of Measure Code - UN/ECE REC 20 delivered by United Nations Economic Commission for Europe (UN/ECE)

Agency name: eBIZ / UN/ECE

Decoding table: NT7

File codes list (Generic code): http://www.ebiz.enea.it/moda-ml/repository/codelist/draft/gc_NT7.xml

Other link: <http://docs.oasis-open.org/ubl/os-UBL-2.1/cl/gc/default/UnitOfMeasureCode-2.1.gc#>

| Code | Description | Adoption note | Date of insertion |
|---------|----------------------------------|---------------|-------------------|
| CMK | square centimetre | | 20/12/2017 |
| CMQ | cubic centimetre | | 20/12/2017 |
| CMT | centimetre | | |
| CNE | centiNewton | | |
| CO2TON | ton of CO2 | | 10/09/2014 |
| COUPLES | couples | | |
| DAY | day | | 22/08/2022 |
| DEGD | decimal degrees | | 04/07/2022 |
| DEGMS | degrees with minutes and seconds | | 01/07/2022 |
| DMQ | cubic decimetre | | |
| E37 | pixel | | 11/04/2018 |
| GRM | gram | | |
| HUR | hour | | |
| INH | inch | | |
| KGM | kilogram | | |
| KMT | kilometer | | |
| KWH | kilowatthours | | 10/09/2014 |
| LBR | pound | | |
| MCG | microgram | | 23/08/2022 |
| MG | milligram | | 23/08/2022 |
| MIN | minute | | |
| MMK | square millimetre | | 20/12/2017 |

| | | | |
|-------|--------------------|--|------------|
| MONTH | month | | 22/08/2022 |
| MSEC | millisecond (time) | | 22/08/2022 |
| MTK | square metre | | 20/12/2017 |
| MTQ | cubic metre | | |
| MTR | metre | | |
| NMB | numero | | |
| ONZ | ounce | | |
| P1 | percent | | |
| PPM | parts per milion | | |
| PZ | piece | | |
| RPM | rounds per metre | | |
| SEC | second (time) | | 22/08/2022 |
| YEAR | year | | 22/08/2022 |
| YRD | yard | | |

T10 - ISO3166 - Country

code of the nation

Agency name: ISO

Decoding table: T10

File codes list (Generic code): http://www.ebiz.enea.it/moda-ml/repository/codelist/draft/gc_T10.xml

Table not printed: there are 240 elements, more than the maximum specified for printing: 99.

TRK01 - list of available services

Agency name: TRICK project

Decoding table: TRK01

File codes list (Generic code): http://www.ebiz.enea.it/moda-ml/repository/codelist/draft/gc_TRK01.xml

| Code | Description | Adoption note | Date of insertion |
|------|--|---------------|-------------------|
| 0 | Traceability | | 07/09/2022 |
| 1 | PCO, Preferential Origin certification | | 07/09/2022 |
| 2 | Circular Manufacturing assessment | | 07/09/2022 |
| 3 | PEF and environmental footprint | | 07/09/2022 |
| 4 | Health protection assessment | | 07/09/2022 |
| 5 | Social and Ethical protection assessment | | 07/09/2022 |

TRK02 - list of services functions

Agency name: TRICK project

Decoding table: TRK02

File codes list (Generic code): http://www.ebiz.enea.it/moda-ml/repository/codelist/draft/gc_TRK02.xml

| Code | Description | Adoption note | Date of insertion |
|----------------|--------------------------------------|----------------------|--------------------------|
| activate | service activation | | 07/09/2022 |
| execution | service execution | | 07/09/2022 |
| getinfo | getting information from the service | | 07/09/2022 |
| proposedreport | proposal for the final report | | 07/09/2022 |
| reportapproval | final report approved | | 07/09/2022 |
| reportrejected | final report rejected | | 07/09/2022 |
| setinfo | uploading information to the service | | 07/09/2022 |