



<http://www.ebiz-tcf.eu>

DRAFT

Extract from IMPLEMENTATION GUIDE  
TRANSACTION "PCO PRELIMINARY INFORMATION"

Version: draft

Date of release: 4/9/2023

Document code: TRC019e

technical Documentation: <http://www.ebiz.enea.it>

XML Schemas repository: <http://www.ebiz.enea.it/moda-ml/repository/schema/draft/default.asp>

Guides repository: <http://www.ebiz.enea.it/moda-ml/repository/guide/draft/default.asp>

Guide filename: TRC019-eBIZ-PcoPreliminaryInformation.pdf

## 0. PREMISE

This document contains a proposal for the updating and extension of eBIZ specifications starting from the eBIZ version 2018. Under the name of 'Draft version' it is reported the result of an extensive work of analysis and consultation aimed at developing and maintaining eBIZ specifications.

In particular, the content of this proposal is the result of various activities, mainly those carried out within the framework of the **TRICK project** funded by the European Commission: grant agreement 958352, call H2020-LOW-CARBON-CIRCULAR-INDUSTRIES-2020 / H2020-LCCI-2020-EASME-twostage.

The technical contents are backwards compatible with the latest official published version, with the exclusion of the totally new concepts added explicitly for the version that are thought as incremental evolution of the knowledge base.

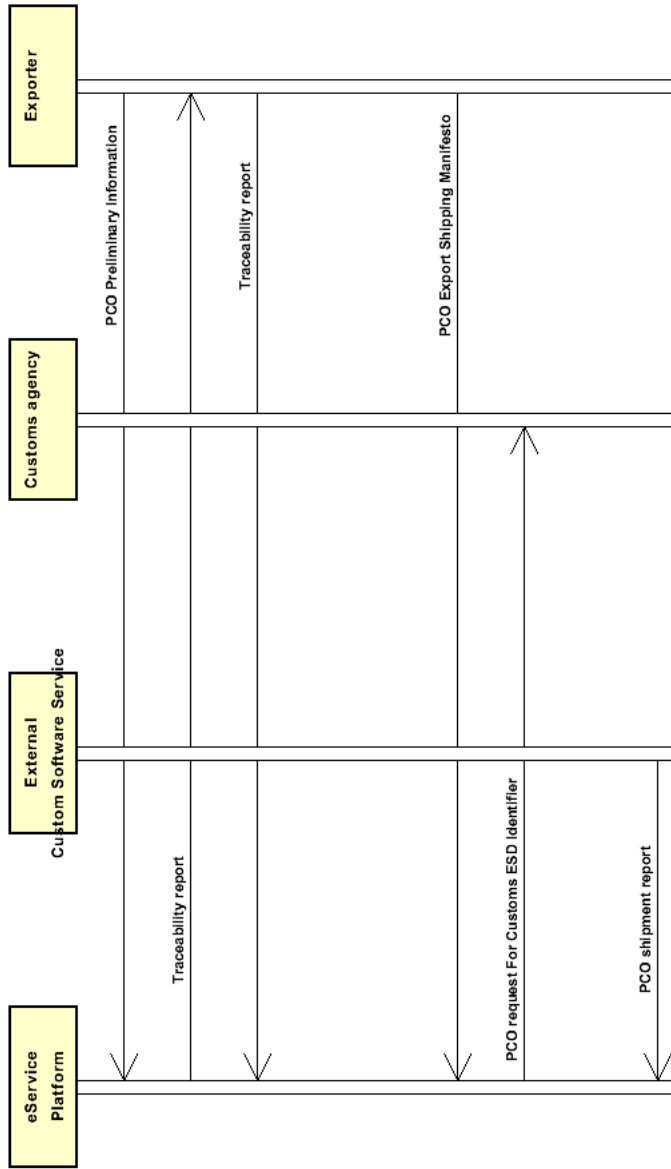
## 1. BUSINESS DESCRIPTION

### 1.1 Scope

This guide aims to illustrate the standard XML format of the document type "PCO Preliminary Information", providing instructions for its use in the context of a TRANSPARENCY SYSTEM involving Fashion Manufacturers, their customers, third parties and in case customs authorities, eBusiness and eCommerce platforms. All the rules necessary for the construction and validation of the document are expressed through a specific XML schema, which is presented in detail in the paragraph "Implementation Guide".

### 1.2. Possible scenario

S1.1 PCO service execution



## 2. IMPLEMENTATION GUIDE

### 2.1 General structure of XML document

All the business data that can be exchanged through this class of documents are shown in the following "document structure", that provides a simplified vision of the Schema.

In particular:

- the two numbers following each element define its "cardinality" (minimum and maximum number of occurrences); the minimum equal zero indicates that the element is optional, the minimum greater than zero indicates that is mandatory;
- the bold character denotes the complex elements (aggregates of simple elements) that were built for the sake of functionality and re-usability of some complex informations sets. The child elements in each parent element are easily spotted as "indented";
- the symbol "@" denotes an attribute of the preceding element; here "the usage indicator (optional, required, ...)" is shown in square brackets.

### Structure

#### **PCOPreliminaryInformation**

@version [Optional] [Default= draft]

@useProfile [Optional]

```
| SRVheader 1-1
| | msgID 0-1
| | msgDate 0-1
| | @dateForm [Optional]
| | senderParty 1-1
| | @role [Optional]
| | @sender [Optional]
| | | id 1-1
| | | | @numberingOrg [Optional]
| | | | legalName 0-1
| | | | dept 0-1
| | | | subDept 0-1
| | | | person 0-1
| | | | @email [Optional]
| | | | @phone [Optional]
| | | | @fax [Optional]
| | | | street 0-1
| | | | city 0-1
| | | | subCountry 0-1
| | | | country 0-1
| | | | postCode 0-1
| | | | geoCoordinates 0-1
| | | | | @um [Optional] [Default= DEGD]
| | | | | @geoRefSystem [Optional]
| | | | | | xGeoCoord 1-1
| | | | | | yGeoCoord 1-1
| | | | | | zGeoCoord 0-1
| | receiverParty 1-1
| | @role [Optional]
| | @sender [Optional]
| | | id 1-1
| | | | @numberingOrg [Optional]
| | | | legalName 0-1
| | | | dept 0-1
| | | | subDept 0-1
| | | | person 0-1
| | | | @email [Optional]
| | | | @phone [Optional]
| | | | @fax [Optional]
| | | | street 0-1
| | | | city 0-1
| | | | subCountry 0-1
| | | | country 0-1
| | | | postCode 0-1
| | | | geoCoordinates 0-1
| | | | | @um [Optional] [Default= DEGD]
```

```

| | | @geoRefSystem [Optional]
| | | | xGeoCoord 1-1
| | | | yGeoCoord 1-1
| | | | zGeoCoord 0-1
| | platformServiceReference 1-1
| | | platformServiceCode 1-1
| | | | @codeList [Optional]
| | | | serviceTicketID 0-1
| | | | serviceRequestedAction 1-1
| | | | @codeList [Optional]

| uniqueProductID 1-unbounded
| | @schemeID [Required]

| exportingCountry 1-1

| destinationCountry 1-1

| invoiceInfo 0-99
| | msgID 1-1
| | msgDate 1-1
| | | @dateForm [Optional]
| | msgCurrency 0-1
| | natureOfTransaction 1-1
| | msgAmount 1-1
| | | @currency [Optional]
| | refDoc 0-1
| | | @docType [Required]
| | | | docID 1-2
| | | | | @numberingOrg [Optional]
| | | | | docDate 0-1
| | | | | | @dateForm [Optional]
| | | | | season 0-1
| | | | | | @numberingOrg [Optional]
| | | | | | @codeList [Optional]
| | | | | | @listName [Optional]
| | | | | | @listVersion [Optional]
| | | | itemID 0-1
| | | attachment 0-1
| | | | @uid [Optional]
| | | | | fileName 0-1
| | | | | | @numberingOrg [Optional]
| | | | | | binaryObject 0-1
| | | | | | | @format [Optional]
| | | | | | | @mime [Optional]
| | | | | | | @encoding [Optional]
| | | | | | | @characterSet [Optional]
| | | | | externalReference 0-99
| | | | | | uri 1-1
| | | | | | | @isURL [Optional] [Default= true]
| | | | | | | mimeTypeCode 0-1
| | | | | | | formatCode 0-1
| | | | | | | encodingCode 0-1
| | | | | | | characterSetCode 0-1
| | | | | | hashFootprint 0-1
| | | | | | | @schemeID [Optional]
| | | | | | | @hashMethod [Required]
| | | | | blockChainReference 0-9
| | | | | | uri 1-1
| | | | | | | @isURL [Optional] [Default= true]
| | | | | | transactionReceipt 1-9
| | attachment 0-1
| | | @uid [Optional]
| | | | fileName 0-1
| | | | | @numberingOrg [Optional]
| | | | | binaryObject 0-1
| | | | | | @format [Optional]
| | | | | | @mime [Optional]

```

- | *@encoding [Optional]*
- | *@characterSet [Optional]*
- | **externalReference 0-99**
- | | uri 1-1
- | | *@isURL [Optional] [Default= true]*
- | | mimeType 0-1
- | | formatCode 0-1
- | | encodingCode 0-1
- | | characterSetCode 0-1
- | hashFootprint 0-1
- | *@schemeID [Optional]*
- | *@hashMethod [Required]*
- | **blockChainReference 0-9**
- | | uri 1-1
- | | *@isURL [Optional] [Default= true]*
- | | transactionReceipt 1-9
- | **invoiceInfoltem 1-unbounded**
- | | itemID 1-1
- | | **refDoc 0-1**
- | | | *@docType [Required]*
- | | | docID 1-2
- | | | *@numberingOrg [Optional]*
- | | | docDate 0-1
- | | | *@dateForm [Optional]*
- | | | season 0-1
- | | | *@numberingOrg [Optional]*
- | | | *@codeList [Optional]*
- | | | *@listName [Optional]*
- | | | *@listVersion [Optional]*
- | | | itemID 0-1
- | | | **attachment 0-1**
- | | | | *@uid [Optional]*
- | | | | fileName 0-1
- | | | | *@numberingOrg [Optional]*
- | | | | binaryObject 0-1
- | | | | *@format [Optional]*
- | | | | *@mime [Optional]*
- | | | | *@encoding [Optional]*
- | | | | *@characterSet [Optional]*
- | | | | **externalReference 0-99**
- | | | | | uri 1-1
- | | | | | *@isURL [Optional] [Default= true]*
- | | | | | mimeType 0-1
- | | | | | formatCode 0-1
- | | | | | encodingCode 0-1
- | | | | | characterSetCode 0-1
- | | | | hashFootprint 0-1
- | | | | *@schemeID [Optional]*
- | | | | *@hashMethod [Required]*
- | | | | **blockChainReference 0-9**
- | | | | | uri 1-1
- | | | | | *@isURL [Optional] [Default= true]*
- | | | | | transactionReceipt 1-9
- | | customsStat 1-1
- | | *@schemeID [Optional] [Default= TARIC]*
- | | description 0-9
- | | *@ln [Optional]*
- | | netWeight 0-1
- | | *@um [Required]*
- | | qty 1-2
- | | *@um [Required]*
- | | year 0-1
- | | price 1-1
- | | *@um [Optional]*
- | | *@priceQualifier [Optional] [Default= NET]*
- | | *@currency [Optional]*
- | | amount 1-1
- | | *@currency [Optional]*

```

| | | productOrigin 1-1
| | | | made 1-1
| | | | refDoc 0-9
| | | | | @docType [Required]
| | | | | | docID 1-2
| | | | | | | @numberingOrg [Optional]
| | | | | | docDate 0-1
| | | | | | | @dateForm [Optional]
| | | | | | season 0-1
| | | | | | | @numberingOrg [Optional]
| | | | | | | @codeList [Optional]
| | | | | | | @listName [Optional]
| | | | | | | @listVersion [Optional]
| | | | | | itemID 0-1
| | | | | attachment 0-1
| | | | | | @uid [Optional]
| | | | | | | fileName 0-1
| | | | | | | | @numberingOrg [Optional]
| | | | | | | binaryObject 0-1
| | | | | | | | @format [Optional]
| | | | | | | | @mime [Optional]
| | | | | | | | @encoding [Optional]
| | | | | | | | @characterSet [Optional]
| | | | | | | externalReference 0-99
| | | | | | | | uri 1-1
| | | | | | | | | @isURL [Optional] [Default= true]
| | | | | | | | | mimeTypeCode 0-1
| | | | | | | | | formatCode 0-1
| | | | | | | | | encodingCode 0-1
| | | | | | | | | characterSetCode 0-1
| | | | | | | hashFootprint 0-1
| | | | | | | | @schemeID [Optional]
| | | | | | | | @hashMethod [Required]
| | | | | | | blockChainReference 0-9
| | | | | | | | uri 1-1
| | | | | | | | | @isURL [Optional] [Default= true]
| | | | | | | | transactionReceipt 1-9
| | | | tracedObject 0-unbounded
| | | | | @objectInstanceTypeCode [Required]
| | | | | | objectInstanceIdentification 1-1
| | | | | | | @objectInstanceTypeCode [Required]
| | | | | | | | objectID 1-9
| | | | | | | | | @schemeID [Required]
| | | | | | productIDandQty 1-99
| | | | | | | uniqueProductID 1-1
| | | | | | | | @schemeID [Required]
| | | | | | | qty 0-2
| | | | | | | | @um [Required]
| | | | | objectTypeCode 1-1
| | | | | note 0-9
| | | | | | @numberingOrg [Optional]
| | | | | | @codeList [Optional]
| | | | | | @noteLabel [Optional]

```

## 2.2 Detailed description of document elements

Following tables show all elements (complex and simple) used in this document. Description includes: 1) element's information: xml tag, name, brief description, 2) data type and syntax constraints, 3) information about usage of the element in a particular position in the document: aggregation notes..

### 2.2.1 Complex elements (Aggregate Business Information Entities)

Complex elements are those elements whose content is composed of other elements (childs).Complex elements are alphabetically ordered.

<b>attachment</b>	an attached document. An attachment can refer to an external document or be included with the document being exchanged <b>XPath</b> <code>PCOPreliminaryInformation/invoiceInfo/attachment: 0-1</code> - note for this position: <i>Here the pdf invoice can be attached as binary object or its remote location can be provided</i>
<b>blockChainReference</b>	blockchain reference - base type: string, max length: 80,
<b>externalReference</b>	details about an external object, such as a document stored at a remote location
<b>geoCoordinates</b>	geographical coordinates
<b>invoiceInfo</b>	Information about an invoice <b>XPath</b> <code>PCOPreliminaryInformation/invoiceInfo: 0-99</code> - note for this position: <i>Any references to product lots must be indicated within this element</i>
<b>invoiceInfoItem</b>	Information about an invoice item (line)
<b>objectInstanceIdentification</b>	Identification of an object instance, it could contain more than one identifier of the same object as long as they refer to different identification schemes <b>XPath</b> <code>PCOPreliminaryInformation/invoiceInfo/invoiceInfoItem/tracedObject/objectInstanceIdentification: 1-1</code> - note for this position: <i>unique identifier of the traced object.</i>
<b>platformServiceReference</b>	service instruction and reference - base type: string,
<b>productIDandQty</b>	product identifier and its quantity <b>XPath</b> <code>PCOPreliminaryInformation/invoiceInfo/invoiceInfoItem/tracedObject/productIDandQty: 1-99</code> - note for this position: <i>inside an event it should indicate the effectively USED (input) or RESULTING (output) quantity of the lot as a consequence of the event. Max cardinality is 1 when @objectInstanceTypeCode='IST'</i>
<b>productOrigin</b>	Origin of the product according to customs regulations
<b>receiverParty</b>	Details of the party receiving the document. - base type: Nad,
<b>refDoc</b>	identification of a document and of an item thereof, to which the message makes reference <b>XPath</b> <code>PCOPreliminaryInformation/invoiceInfo/invoiceInfoItem/refDoc: 0-1</code> Best Practice - note for this position: <i>Here the order whose originated the invoice line can be identified</i> <b>XPath</b> <code>PCOPreliminaryInformation/invoiceInfo/invoiceInfoItem/productOrigin/refDoc: 0-9</code> - note for this position: <i>reference to document certifying the origin</i> <b>XPath</b> <code>PCOPreliminaryInformation/invoiceInfo/refDoc: 0-1</code> Best Practice - note for this position: <i>Here the order whose originated the invoice can be identified</i>
<b>senderParty</b>	Details of the party sending the document. - base type: Nad,



<b>SRVheader</b>	header of documents supporting ePlatform services
<b>tracedObject</b>	traced product instance or lot. Usually it refers to just one productID (i.e. one SKU); nevertheless if the lot is made of clothing, it can refer to more than one SKUs which differ in size. - base type: ,

## 2.2.2 Simple elements (Basic Business Information Entities)

Simple elements are those elements whose content is characterized by a data type plus a domain of possible values. Simple elements are alphabetically ordered.

amount	total monetary value of the goods and services considered in the message line (usually net price x quantity) - base type: decimal, min inclusive: 0, fraction digits: 2,
binaryObject	a binary large object containing an attached document, Coding 'base64Binary' is recommended. - base type: base64Binary,
@characterSet	the character set of the binary object (examples UTF-8, UTF-16, Windows-1252, ISO-8859-7,...) - base type: normalizedString,
characterSetCode	the character set of an external document (examples UTF-8, UTF-16, Windows-1252, ISO-8859-7,...) - base type: normalizedString,
city	name of the city (town, village) - base type: string, max length: 40,
@codeList	it specifies the URL where the list of codes used to make an instance of the element can be found - base type: string, max length: 255, <b>XPath</b> <b>PCOPreliminaryInformation/invoiceInfo/invoiceInfoItem/refDoc/season/@codeList: [Optional]</b> - note for this position: <i>this attribute should be used either single or coupled with "listName" and "listVersion"</i> <b>XPath</b> <b>PCOPreliminaryInformation/SRVheader/platformServiceReference/serviceRequestedAction/@codeList: [Optional]</b> - note for this position: <i>Insert URL codelist of the platform services actions available.</i> <b>XPath</b> <b>PCOPreliminaryInformation/SRVheader/platformServiceReference/platformServiceCode/@codeList: [Optional]</b> - note for this position: <i>indicate the URL of the platform supplying the service</i> <b>XPath</b> <b>PCOPreliminaryInformation/invoiceInfo/refDoc/season/@codeList: [Optional]</b> - note for this position: <i>this attribute should be used either single or coupled with "listName" and "listVersion"</i> <b>XPath</b> <b>PCOPreliminaryInformation/note/@codeList: [Optional]</b> - note for this position: <i>must be used to provide (URL) the list of codes used in "noteLabel"</i> <b>XPath</b> <b>PCOPreliminaryInformation/invoiceInfo/invoiceInfoItem/productOrigin/refDoc/season/@codeList: [Optional]</b> - note for this position: <i>this attribute should be used either single or coupled with "listName" and "listVersion"</i>
country	code of the nation - base type: string, cod. table: T10 <a href="http://www.ebiz.enea.it/moda-ml/repository/codelist/draft/gc_T10.xml">http://www.ebiz.enea.it/moda-ml/repository/codelist/draft/gc_T10.xml</a>
@currency	currency in which a specified monetary data is expressed - base type: string, cod. table: T9 <a href="http://www.ebiz.enea.it/moda-ml/repository/codelist/draft/gc_T9.xml">http://www.ebiz.enea.it/moda-ml/repository/codelist/draft/gc_T9.xml</a> <b>XPath</b>

	<p style="color: red;">PCOPreliminaryInformation/invoiceInfo/invoiceInfoItem/price/@currency: [Optional]</p> <p>- note for this position: <i>Currency referred by the price.</i></p>
customsStat	<p>statistic code assigned by Customs to a specified product (TARIC code)</p> <p>- base type: string, max length: 15,</p>
@dateForm	<p>format used for the date</p> <p>- base type: string, cod. table: NT29</p> <p><a href="http://www.ebiz.enea.it/moda-ml/repository/codelist/draft/gc_NT29.xml">http://www.ebiz.enea.it/moda-ml/repository/codelist/draft/gc_NT29.xml</a></p>
dept	<p>name or code of a department</p> <p>- base type: string, max length: 40,</p>
description	<p>free text description. The content of the element must be unique, it might be translated and repeated into more languages (thus no more than one instance for each language).</p> <p>- base type: string, max length: 250,</p> <p><b>XPath</b></p> <p style="color: red;">PCOPreliminaryInformation/invoiceInfo/invoiceInfoItem/description: 0-9</p> <p>- note for this position: <i>Only one instance of this element for each different value of 'ln' attribute (language)</i></p>
destinationCountry	<p>code of the destination country of the shipment</p> <p>- base type: string, cod. table: T10</p> <p><a href="http://www.ebiz.enea.it/moda-ml/repository/codelist/draft/gc_T10.xml">http://www.ebiz.enea.it/moda-ml/repository/codelist/draft/gc_T10.xml</a></p>
docDate	<p>date of issue of the referenced document, according to one of the patterns YYYY-MM-DD, YYYY-MM-DD:HH-MM or YYYY-WW.</p> <p>- base type: string,</p>
docID	<p>identification number of the referenced document</p> <p>- base type: string, max length: 80,</p>
@docType	<p>type or class to which the referenced document belongs</p> <p>- base type: string, cod. table: T21</p> <p><a href="http://www.ebiz.enea.it/moda-ml/repository/codelist/draft/gc_T21.xml">http://www.ebiz.enea.it/moda-ml/repository/codelist/draft/gc_T21.xml</a></p>
@email	<p>electronic mail address of the contact person within a Party</p> <p>- base type: string, max length: 250,</p>
@encoding	<p>specifies the decoding algorithm of the binary object</p> <p>- base type: normalizedString,</p>
encodingCode	<p>the encoding/decoding algorithm used with the external object (example is 'base64Binary')</p> <p>- base type: normalizedString,</p>
exportingCountry	<p>code of the country from which the goods are exported</p> <p>- base type: string, cod. table: T10</p> <p><a href="http://www.ebiz.enea.it/moda-ml/repository/codelist/draft/gc_T10.xml">http://www.ebiz.enea.it/moda-ml/repository/codelist/draft/gc_T10.xml</a></p>
@fax	<p>fax number of the contact person within a Party</p> <p>- base type: string, max length: 35,</p>
fileName	<p>unique identifier (name) of the file</p> <p>- base type: string, max length: 255,</p>
@format	<p>the format of the binary content (examples xml, pdf, doc,...)</p> <p>- base type: string,</p>
formatCode	<p>the format of the external object (examples xml, pdf, doc,...)</p> <p>- base type: normalizedString,</p>
@geoRefSystem	<p>georeference system adopted for the coordinate (in example wgs84 with decimal degree o degree with minute and seconds)</p> <p>- base type: string,</p>
hashFootprint	<p>footprint obtained by applying an hashing algorithm</p> <p>- base type: string, max length: 1024,</p>
@hashMethod	<p>type of used hashing algorithm</p>

	<p>- base type: string, max length: 80, cod. table: NT333  <a href="http://www.ebiz.enea.it/moda-ml/repository/codelist/draft/gc_NT333.xml">http://www.ebiz.enea.it/moda-ml/repository/codelist/draft/gc_NT333.xml</a></p>
id	<p>primary identification code of a Party; it is recommended to use an EORI number (with @numberingOrg= "EO") or the format: nation code (ISO 3166) + national tax code (i.e. VAT identification number ) with @numberingOrg= "MF"</p> <p>- base type: string, max length: 15,</p>
@isURL	<p>it indicates if the referred element is an URL (true) or not (false)</p> <p>- base type: boolean,</p> <p>XPath  PCOPreliminaryInformation/invoiceInfo/invoiceInfoItem/productOrigin/refDoc/attachment/externalReference/uri/@isURL: [Optional] [Default= true]</p> <p>- note for this position: <i>usage of URLs is recommended</i></p> <p>XPath PCOPreliminaryInformation/invoiceInfo/attachment/blockChainReference/uri/@isURL: [Optional] [Default= true]</p> <p>- note for this position: <i>usage of URLs is recommended</i></p> <p>XPath  PCOPreliminaryInformation/invoiceInfo/invoiceInfoItem/refDoc/attachment/blockChainReference/uri/@isURL: [Optional] [Default= true]</p> <p>- note for this position: <i>usage of URLs is recommended</i></p> <p>XPath  PCOPreliminaryInformation/invoiceInfo/invoiceInfoItem/refDoc/attachment/externalReference/uri/@isURL: [Optional] [Default= true]</p> <p>- note for this position: <i>usage of URLs is recommended</i></p> <p>XPath  PCOPreliminaryInformation/invoiceInfo/invoiceInfoItem/productOrigin/refDoc/attachment/blockChainReference/uri/@isURL: [Optional] [Default= true]</p> <p>- note for this position: <i>usage of URLs is recommended</i></p> <p>XPath PCOPreliminaryInformation/invoiceInfo/attachment/externalReference/uri/@isURL: [Optional] [Default= true]</p> <p>- note for this position: <i>usage of URLs is recommended</i></p> <p>XPath PCOPreliminaryInformation/invoiceInfo/refDoc/attachment/externalReference/uri/@isURL: [Optional] [Default= true]</p> <p>- note for this position: <i>usage of URLs is recommended</i></p> <p>XPath PCOPreliminaryInformation/invoiceInfo/refDoc/attachment/blockChainReference/uri/@isURL: [Optional] [Default= true]</p> <p>- note for this position: <i>usage of URLs is recommended</i></p>
itemID	<p>number of the line/item of the referenced document</p> <p>- base type: string, max length: 40,</p> <p>XPath  PCOPreliminaryInformation/invoiceInfo/invoiceInfoItem/itemID: 1-1</p> <p>- note for this position: <i>Indicate the item/line of the referred invoice</i></p>
legalName	<p>legal name</p> <p>- base type: string, max length: 250,</p>
@listName	<p>the name of the list of codes used to make an instance of the element (it might be thought as descriptive element, i.e. 'fabric printing technologies', or not, i.e. "T264")</p> <p>- base type: string, max length: 40,</p> <p>XPath PCOPreliminaryInformation/invoiceInfo/refDoc/season/@listName: [Optional]</p> <p>- note for this position: <i>this attribute should always be used coupled with "numberingOrg"</i></p> <p>XPath  PCOPreliminaryInformation/invoiceInfo/invoiceInfoItem/refDoc/season/@listName: [Optional]</p> <p>- note for this position: <i>this attribute should always be used coupled with "numberingOrg"</i></p> <p>XPath  PCOPreliminaryInformation/invoiceInfo/invoiceInfoItem/productOrigin/refDoc/season/@listName: [Optional]</p> <p>- note for this position: <i>this attribute should always be used coupled with "numberingOrg"</i></p>
@listVersion	<p>it specifies the version of the list of codes used to make an instance of the element</p> <p>- base type: string, max length: 6,</p> <p>XPath PCOPreliminaryInformation/invoiceInfo/refDoc/season/@listVersion: [Optional]</p> <p>- note for this position: <i>this attribute should always be used coupled with "numberingOrg"</i></p>

	<p><i>g</i> and <i>listName</i> XPath PCOPreliminaryInformation/invoiceInfo/invoiceInfoItem/productOrigin/refDoc/season/@listVersion: [Optional] - note for this position: <i>this attribute should always be used coupled with "numberingOrg" and "listName"</i> XPath PCOPreliminaryInformation/invoiceInfo/invoiceInfoItem/refDoc/season/@listVersion: [Optional] - note for this position: <i>this attribute should always be used coupled with "numberingOrg" and "listName"</i></p>
@ln	<p>Language code. - base type: string, cod. table: NT60 <a href="http://www.ebiz.enea.it/moda-ml/repository/codelist/draft/gc_NT60.xml">http://www.ebiz.enea.it/moda-ml/repository/codelist/draft/gc_NT60.xml</a></p>
made	<p>specifies the country where the product has been manufactured - base type: string, cod. table: T10 <a href="http://www.ebiz.enea.it/moda-ml/repository/codelist/draft/gc_T10.xml">http://www.ebiz.enea.it/moda-ml/repository/codelist/draft/gc_T10.xml</a></p>
@mime	<p>the mime type of the binary object - base type: normalizedString,</p>
mimeCode	<p>mime type of the external object - base type: normalizedString,</p>
msgAmount	<p>total monetary amount of the message - base type: decimal, min inclusive: 0, fraction digits: 2,</p>
msgCurrency	<p>currency used to express the monetary amounts of the message - base type: string, cod. table: T9 <a href="http://www.ebiz.enea.it/moda-ml/repository/codelist/draft/gc_T9.xml">http://www.ebiz.enea.it/moda-ml/repository/codelist/draft/gc_T9.xml</a> XPath PCOPreliminaryInformation/invoiceInfo/msgCurrency: 0-1 - note for this position: <i>Currency used in the invoice</i></p>
msgDate	<p>date of issue of the present message (xml document), according to one of the patterns YYYY-MM-DD, YYYY-MM-DD:HH-MM or YYYY-WW. - base type: string, XPath PCOPreliminaryInformation/invoiceInfo/msgDate: 1-1 - note for this position: <i>Invoice issue date</i></p>
msgID	<p>key identifier of the business document in the information system of the issuing Party. In case of more despatches of the same business document, it is unchanged. - base type: string, max length: 35, XPath PCOPreliminaryInformation/invoiceInfo/msgID: 1-1 - note for this position: <i>Invoice identifier</i></p>
natureOfTransaction	<p>Nature of the business transaction (e.g. indicated on the customs declaration). - base type: string, cod. table: NT331 <a href="http://www.ebiz.enea.it/moda-ml/repository/codelist/draft/gc_NT331.xml">http://www.ebiz.enea.it/moda-ml/repository/codelist/draft/gc_NT331.xml</a></p>
netWeight	<p>the net weight declared for transport or customs purpose - base type: decimal, min inclusive: 0, fraction digits: 2, XPath PCOPreliminaryInformation/invoiceInfo/invoiceInfoItem/netWeight: 0-1 - note for this position: <i>Provide the weight in kilograms (attribute um='KGM')</i></p>
note	<p>free text or structured (computer processing) note. For note structuring use the attributes "noteLabel" and "codelist" - base type: string, max length: 350,</p>
@noteLabel	<p>subject qualifier of a note - base type: string, max length: 35, XPath PCOPreliminaryInformation/note/@noteLabel: [Optional] - note for this position: <i>must be used to qualify the subject of the note</i></p>
@numberingOrg	<p>code specifying the organisation who has created or owns the coding or numbering system - base type: string, cod. table: NT6 <a href="http://www.ebiz.enea.it/moda-ml/repository/codelist/draft/gc_NT6.xml">http://www.ebiz.enea.it/moda-ml/repository/codelist/draft/gc_NT6.xml</a> XPath PCOPreliminaryInformation/invoiceInfo/invoiceInfoItem/productOrigin/refDoc/d</p>

	<p>ocID/@numberingOrg: [Optional]  - note for this position: <i>here can be specified whose document numbering is used (e.g. : Client, Supplier, ..)</i>  XPath  PCOPreliminaryInformation/invoiceInfo/invoiceInfoItem/productOrigin/refDoc/season/@numberingOrg: [Optional]  - note for this position: <i>this attribute should be used either single or coupled with "listName" and "listVersion"</i>  XPath PCOPreliminaryInformation/note/@numberingOrg: [Optional]  - note for this position: <i>must be used to specify the organization that created the list of codes used in "noteLabel"</i>  XPath  PCOPreliminaryInformation/invoiceInfo/invoiceInfoItem/refDoc/docID/@numberingOrg: [Optional]  - note for this position: <i>here can be specified whose document numbering is used (e.g. : Client, Supplier, ..)</i>  XPath  PCOPreliminaryInformation/invoiceInfo/invoiceInfoItem/refDoc/season/@numberingOrg: [Optional]  - note for this position: <i>this attribute should be used either single or coupled with "listName" and "listVersion"</i>  XPath PCOPreliminaryInformation/invoiceInfo/refDoc/season/@numberingOrg: [Optional]  - note for this position: <i>this attribute should be used either single or coupled with "listName" and "listVersion"</i>  XPath PCOPreliminaryInformation/invoiceInfo/refDoc/docID/@numberingOrg: [Optional]  - note for this position: <i>here can be specified whose document numbering is used (e.g. : Client, Supplier, ..)</i></p>
objectID	<p>Object identifier  - base type: string,  XPath  PCOPreliminaryInformation/invoiceInfo/invoiceInfoItem/tracedObject/objectInstanceIdentification/objectID: 1-9  - note for this position: <i>multiple values of objectID are allowed for different representations of the same object that must differ for the value of schemeID. In traceability transactions there must be at least the UNIQUE code assigned by the platform (e.g. TRN)</i></p>
@objectInstanceTypeCode	<p>code that identifies the type of object instance  - base type: string, cod. table: NT202  <a href="http://www.ebiz.enea.it/moda-ml/repository/codelist/draft/gc_NT202.xml">http://www.ebiz.enea.it/moda-ml/repository/codelist/draft/gc_NT202.xml</a></p>
objectTypeCode	<p>code that identifies the type of object  - base type: string, cod. table: T302  <a href="http://www.ebiz.enea.it/moda-ml/repository/codelist/draft/gc_T302.xml">http://www.ebiz.enea.it/moda-ml/repository/codelist/draft/gc_T302.xml</a></p>
person	<p>name of a person (e.g. contact person within an organization)  - base type: string, max length: 40,</p>
@phone	<p>phone number of the contact person within a Party  - base type: string, max length: 35,</p>
platformServiceCode	<p>code of the available service  - base type: string, cod. table: TRK01  <a href="http://www.ebiz.enea.it/moda-ml/repository/codelist/draft/gc_TRK01.xml">http://www.ebiz.enea.it/moda-ml/repository/codelist/draft/gc_TRK01.xml</a></p>
postCode	<p>code defining the postal zone  - base type: string, max length: 10,</p>
price	<p>unit price of the article, object or service specified  - base type: decimal, min inclusive: 0, fraction digits: 4,</p>
@priceQualifier	<p>type of price with reference to discount and taxes  - base type: string, cod. table: NT20  <a href="http://www.ebiz.enea.it/moda-ml/repository/codelist/draft/gc_NT20.xml">http://www.ebiz.enea.it/moda-ml/repository/codelist/draft/gc_NT20.xml</a></p>
qty	<p>net quantity of the article or object correlated, qualified by the function of the document (ordering, delivering, ..) and by the context  - base type: decimal, min inclusive: 0, fraction digits: 2,  XPath  PCOPreliminaryInformation/invoiceInfo/invoiceInfoItem/tracedObject/productID</p>

	<p><b>andQty/qty: 0-2</b>  - note for this position: <i>quantity of the product, identified by uniqueProductID. This element can have two instances only if the units of measure are different.</i>  XPath  PCOPreliminaryInformation/invoiceInfo/invoiceInfo/qty: 1-2  - note for this position: <i>This element can have two instances only if the units of measure are different</i></p>
@role	<p>Third Party role qualifier  - base type: string, cod. table: NT2  <a href="http://www.ebiz.enea.it/moda-ml/repository/codelist/draft/gc_NT2.xml">http://www.ebiz.enea.it/moda-ml/repository/codelist/draft/gc_NT2.xml</a>  XPath PCOPreliminaryInformation/SRVheader/receiverParty/@role: [Optional]  - note for this position: <i>The use of this attribute is mandatory when the element to which it is associated has TRCHeader as its parent.</i>  XPath PCOPreliminaryInformation/SRVheader/senderParty/@role: [Optional]  - note for this position: <i>The use of this attribute is mandatory when the element to which it is associated has TRCHeader as its parent.</i></p>
@schemeID	<p>identifier of an identification scheme  - base type: string,  XPath  PCOPreliminaryInformation/invoiceInfo/invoiceInfo/customsStat/@schemeID: [Optional] [Default= TARIC]  - note for this position: <i>By default the value is TARIC, other different coding schemes must be indicated</i>  XPath PCOPreliminaryInformation/invoiceInfo/refDoc/attachment/hashFootprint/@schemeID: [Optional]  - note for this position: <i>specify for which system this hash footprint might be used as identifier (for example HDFS system..)</i>  XPath PCOPreliminaryInformation/invoiceInfo/attachment/hashFootprint/@schemeID: [Optional]  - note for this position: <i>specify for which system this hash footprint might be used as identifier (for example HDFS system..)</i>  XPath  PCOPreliminaryInformation/invoiceInfo/invoiceInfo/productOrigin/refDoc/attachment/hashFootprint/@schemeID: [Optional]  - note for this position: <i>specify for which system this hash footprint might be used as identifier (for example HDFS system..)</i>  XPath  PCOPreliminaryInformation/invoiceInfo/invoiceInfo/refDoc/attachment/hashFootprint/@schemeID: [Optional]  - note for this position: <i>specify for which system this hash footprint might be used as identifier (for example HDFS system..)</i></p>
season	<p>sale season; defined as: season (1 crt) + year (4 crt) - season: S/S=1 A/W=2 Spring=3 Summer=4 Autumn=5 Winter=6: for more than four seasons use alphabetic sequence: 1st season=A 2nd season=B etc.etc.  - base type: string, max length: 15,  XPath  PCOPreliminaryInformation/invoiceInfo/invoiceInfo/refDoc/season: 0-1  - note for this position: <i>here indicates the season to which the referenced document belongs</i>  XPath  PCOPreliminaryInformation/invoiceInfo/invoiceInfo/productOrigin/refDoc/season: 0-1  - note for this position: <i>here indicates the season to which the referenced document belongs</i>  XPath PCOPreliminaryInformation/invoiceInfo/refDoc/season: 0-1  - note for this position: <i>here indicates the season to which the referenced document belongs</i></p>
@sender	<p>qualifier that specifies the Party issuing of the document  - base type: boolean,  XPath PCOPreliminaryInformation/SRVheader/senderParty/@sender: [Optional]  - note for this position: <i>This attribute is mandatory when the STYLESHEET must be used.</i>  XPath PCOPreliminaryInformation/SRVheader/receiverParty/@sender: [Optional]  - note for this position: <i>This attribute is mandatory when the STYLESHEET must be used.</i></p>

serviceRequestedAction	requested service action - base type: string, cod. table: TRK02 <a href="http://www.ebiz.enea.it/moda-ml/repository/codelist/draft/gc_TRK02.xml">http://www.ebiz.enea.it/moda-ml/repository/codelist/draft/gc_TRK02.xml</a>
serviceTicketID	service ticket identifier - base type: string, XPath <b>PCOPreliminaryInformation/SRVheader/platformServiceReference/serviceTicketID: 0-1</b> - note for this position: <i>mandatory after activation</i>
street	street and building number identifying a location - base type: string, max length: 80,
subCountry	short name or code of the sub-country entity - base type: string, max length: 9,
subDept	name or code of a department - base type: string, max length: 40,
transactionReceipt	transaction receipt on blockchain - base type: string, max length: 1024,
@uid	unique element identifier within the xml document - base type: string,
@um	specification of the unit of measure - base type: string, cod. table: NT7 <a href="http://www.ebiz.enea.it/moda-ml/repository/codelist/draft/gc_NT7.xml">http://www.ebiz.enea.it/moda-ml/repository/codelist/draft/gc_NT7.xml</a> XPath <b>PCOPreliminaryInformation/SRVheader/receiverParty/geoCoordinates/@um: [Optional] [Default= DEGD]</b> - note for this position: <i>when not specified assume decimal DEGREES</i> XPath <b>PCOPreliminaryInformation/invoiceInfo/invoiceInfoItem/price/@um: [Optional]</b> - note for this position: <i>Unit of measure of the product to which the price is referred (price per meter)</i> XPath <b>PCOPreliminaryInformation/SRVheader/senderParty/geoCoordinates/@um: [Optional] [Default= DEGD]</b> - note for this position: <i>when not specified assume decimal DEGREES</i>
uniqueProductID	Unique product identifier. It identifies the product completely, differentiating any variants, sizes, colors, etc. It should be unique throughout the whole value chain. (It can be the GTIN) - base type: string, max length: 80,
uri	Uniform Resource Identifier (URI) that identifies the external object as an Internet resource - base type: normalizedString, XPath <b>PCOPreliminaryInformation/invoiceInfo/refDoc/attachment/blockChainReference/uri: 1-1</b> - note for this position: <i>reference to the used blockchain ( example: url https://etherscan.io/ of ethereum)</i> XPath <b>PCOPreliminaryInformation/invoiceInfo/invoiceInfoItem/productOrigin/refDoc/attachment/blockChainReference/uri: 1-1</b> - note for this position: <i>reference to the used blockchain ( example: url https://etherscan.io/ of ethereum)</i> XPath <b>PCOPreliminaryInformation/invoiceInfo/attachment/blockChainReference/uri: 1-1</b> - note for this position: <i>reference to the used blockchain ( example: url https://etherscan.io/ of ethereum)</i> XPath <b>PCOPreliminaryInformation/invoiceInfo/invoiceInfoItem/refDoc/attachment/blockChainReference/uri: 1-1</b> - note for this position: <i>reference to the used blockchain ( example: url https://etherscan.io/ of ethereum)</i>
@useProfile	use profile to which the present document is compliant if it was agreed by the parties. It is suggested a URI with reference to the firms or the URL of the profile. - base type: string,



@version	Dictionary version from which the instance has been created - base type: string, cod. table: NT100 <a href="http://www.ebiz.enea.it/moda-ml/repository/codelist/draft/gc_NT100.xml">http://www.ebiz.enea.it/moda-ml/repository/codelist/draft/gc_NT100.xml</a>
xGeoCoord	geographical coordinate x , corresponding to latitude - base type: decimal,
year	reference year - base type: integer, min inclusive: 1800, max inclusive: 2100, <b>XPath</b> <b>PCOPreliminaryInformation/invoiceInfo/invoiceInfoItem/year: 0-1</b> - note for this position: <i>Year of production of the goods</i>
yGeoCoord	geographical coordinate y , corresponding to longitude - base type: decimal,
zGeoCoord	geographical coordinate z , corresponding to altitude - base type: decimal, <b>XPath</b> <b>PCOPreliminaryInformation/SRVheader/receiverParty/geoCoordinates/zGeoCoord: 0-1</b> - note for this position: <i>altitude might be omitted</i> <b>XPath</b> <b>PCOPreliminaryInformation/SRVheader/senderParty/geoCoordinates/zGeoCoord: 0-1</b> - note for this position: <i>altitude might be omitted</i>



## 2.3 Suggested best practices

**PCOPreliminaryInformation/invoiceInfo/invoiceInfoItem/refDoc** (identification of a document and of an item thereof, to which the message makes reference)

Use this element only if the invoice lines are related to different orders; otherwise use the refDoc at invoiceInfo element level

**PCOPreliminaryInformation/invoiceInfo/refDoc** (identification of a document and of an item thereof, to which the message makes reference)

Use this element only if all the invoice lines are related to the same order; otherwise use the refDoc at invoiceInfoItem element level

**PCOPreliminaryInformation/invoiceInfo/refDoc/docID** (identification number of the referenced document)

numberingOrg indicates the role that produced the document identifier (it is allowed to declare two different ones -e.g. customer and supplier - with two docID with different numberingOrg

**PCOPreliminaryInformation/invoiceInfo/invoiceInfoItem/refDoc/docID** (identification number of the referenced document)

numberingOrg indicates the role that produced the document identifier (it is allowed to declare two different ones -e.g. customer and supplier - with two docID with different numberingOrg

**PCOPreliminaryInformation/invoiceInfo/invoiceInfoItem/productOrigin/refDoc/docID** (identification number of the referenced document)

numberingOrg indicates the role that produced the document identifier (it is allowed to declare two different ones -e.g. customer and supplier - with two docID with different numberingOrg

**PCOPreliminaryInformation/invoiceInfo/invoiceInfoItem/refDoc/attachment/externalReference/mimeType** (mime type of the external object)

Use coding from IANA <http://www.iana.org/assignments/media-types/media-types.xml>

**PCOPreliminaryInformation/invoiceInfo/refDoc/attachment/externalReference/mimeType** (mime type of the external object)

Use coding from IANA <http://www.iana.org/assignments/media-types/media-types.xml>

**PCOPreliminaryInformation/invoiceInfo/attachment/externalReference/mimeType** (mime type of the external object)

Use coding from IANA <http://www.iana.org/assignments/media-types/media-types.xml>

**PCOPreliminaryInformation/invoiceInfo/invoiceInfoItem/productOrigin/refDoc/attachment/externalReference/mimeType** (mime type of the external object)

Use coding from IANA <http://www.iana.org/assignments/media-types/media-types.xml>

## 2.4 Enumeration tables

List of enumeration tables used in the XML document. You can find all the tables with the corresponding codes at:  
<http://www.ebiz.enea.it/eBIZ/imple/eBIZTCU-draft.asp?lingua=en&pag=6>

NT100 - eBIZ TCFUpstream version  
NT2 - third party qualifier  
NT20 - price qualifier  
NT202 - Type of the object Instance  
NT29 - format of a date  
NT331 - Nature of transaction  
NT333 - type of hashing algorithm  
NT6 - coding system owner/issuer  
NT60 - language, codes from ISO 639-1 (subset)  
NT7 - unit of measure  
T10 - ISO3166 - Country  
T21 - type of document  
T302 - type of object  
T9 - ISO4217 - Currency  
TRK01 - list of available services  
TRK02 - list of services functions

## ACKNOWLEDGEMENT



This action is part of the TRICK project, which has received funding from Horizon 2020 research and innovation programme under grant agreement No. 958352 of the European Union.

## DISCLAIMER

The content of this document represents the views of the authors only and is their sole responsibility; it cannot be considered to reflect the views of the European Commission or any other body of the European Union.

The European Commission does not accept any responsibility for use that may be made of the information it contains.

# Annex A

Representative images of the principal complex elements' structure.

